



**WOMEN AND MEN ALIKE LOVE THE PERSONAL ANTI AGING PATCH!**

I have been using THE PERSONAL ANTI AGING PATCHES for over a year now and the results are fantastic! Not only do I notice and feel the difference, but most importantly my family and friends see it too! I get compliments daily about my youthful look and energy.

SP, NYC, NEW YORK



Today is my first time using the **PERSONAL ANTI-AGING PATCH**. It's not exactly that I think your patch will reverse the effects of time, but rather it might postpone them. I am very excited and understand that body cell hydration is a key factor too.

Now daily, I plan on drinking half of my body weight in fluid ounces of good quality water and further improving my diet and exercise habits. I love to try new products especially non transdermal and non-invasive like yours.

JW, BOULDER, COLORADO

As time marches on, a lot of people accept the challenge of trying to look and feel younger. With NANO-TECHNOLOGY, INVISI-TECH and the PERSONAL ANTI-AGING PATCH you have a distinct advantage.

**PERSONAL AGING** is your body's natural reaction to different causes that affect and / or block body meridians.

**PERSONAL PATCHES** for ANTI-AGING help the mind and body to cope with YOUR aging process.



Personal Patches are not a food or a drug. They are exclusive to the Human Body Software Industry utilizing NANOTECHNOLOGY & our patent pending INVISI-TECH programming.



**THE PERSONAL ANTI-AGING PATCH**

NO PILLS NO DRUGS  
NO ORGANICS NO SHOTS  
SIMPLY AMAZING  
[PERSONALPATCHES.COM](http://PERSONALPATCHES.COM)





PERSONAL  
PATCHES.COM

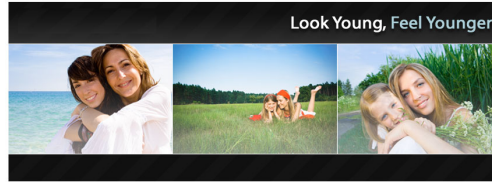
DESIGNER PATCH

Have developed a distinctive and proprietary method of programming multi-layered holographic discs, we call Personal Patches™ with Invisi-Tech,™ an exclusive patent-pending technology that adhesively binds sound vibrations & frequency waves into the holograms for the purpose of influencing the effects of acting and feeling younger.

Once applied, the body's energy field triggers the release of these vibrations stored in the ANTI AGING PATCH Personal Patch and affects the causes of pain. The vibration transfer applied to ANTI AGING PATCH Personal Patches is non-transdermal, non-invasive and therefore, nothing enters into the body thru the skin. The ANTI AGING PATCH Personal Patch properly placed, can cause a remarkable decrease in pain with calming and sedating the bodies energy flow(s).

DISCLAIMER

PersonalPatches.com™ products are sold for learning, self-improvement and simple relaxation. No statement contained in this writing, and no information provided by any PersonalPatches.com agent, should be construed as a claim or representation that these products are intended for use in the diagnosis, cure, mitigation, treatment or prevention of disease or any other medical condition. The information contained in this writing is deemed to be based on reliable and authoritative report. However, certain persons considered experts may disagree with one or more of the statements contained here. PersonalPatches.com assumes no liability or risk involved in the use of the products described here. We make no warranty, expressed or implied, other than that the material conforms to applicable standard specifications. All other legal statements at [www.PersonalPatches.com](http://www.PersonalPatches.com)



For over 5,000 years, traditional Chinese healing arts have developed various forms of promoting inner energy flow. The refined arts of acupuncture, acupressure point massage (aka: Shiatsu, or Acupressure), Tai 'Chi, Qi Gong are all time-tested vehicles for inner energy promotion. Mapped out from ancient Chinese medical texts and named after different organs and body systems, the energy flow runs along body pathways called, "meridians."

A common example of energy flow can be equated to the movement of water through a garden hose. The water flows freely until a kink occurs in the hose. This reduces a strong flow to slow trickle. If we straighten the kink, the water flow is no longer blocked and its flow strength returns. This can be compared to the stimulating of an acupuncture point along a stagnant meridian. Point stimulus restores energy flow.



Place the PERSONAL ANTI AGING PATCH 4 finger widths below the right knee and slightly further to the right or outside.

THE CLOSELY GUARDED

**SECRET OF CHINESE EMPERORS!**

*Included: with your shipment of anti-aging patches!*

**PERSONAL ANTI AGING PATCHES**

Suggested use: HUMANBODYSOFTWARE

