

I have had a very bad shoulder and a lot of pain that my doctor prescribed pain pills for.

When I heard about your Personal Pain Patches, I tried them and I not only got immediate relief, but

the Personal Pain Patch also improved the usable motion of my arm.

After two months of using the patches, I am now off the pain pills and I only have mild pain in the shoulder which I now relieve with your products. Thank you for the relief because I thought I would never get off the pain pill medication.

DB, Georgia



Today is my first time using the Personal Pain relief patches. This morning my neck, shoulders and my lower back were inflamed and aching. They do most of the time due to spinal injuries from a prior car accident.

I decided to try the pain management personal patches, placing the discs at the base of my neck over the pain. I can hardly believe it. The pain went right away! COMPLETELY. I believe that the cause of the pain has gotten better because it does not come back as it used to, but now I don't have to deal with the pain!

Thank you for your great product!!!

SS, Florida

Everyone has problems with pain such as from injury, surgery, arthritis, headache, etc. With the Personal Pain Management Patch, pain can be reduced or eliminated completely with one application.

Pain is caused by blockages in the meridians caused by the body's natural reaction to different causes. Pain Management Personal Patches helps the body to relieve these blockages.

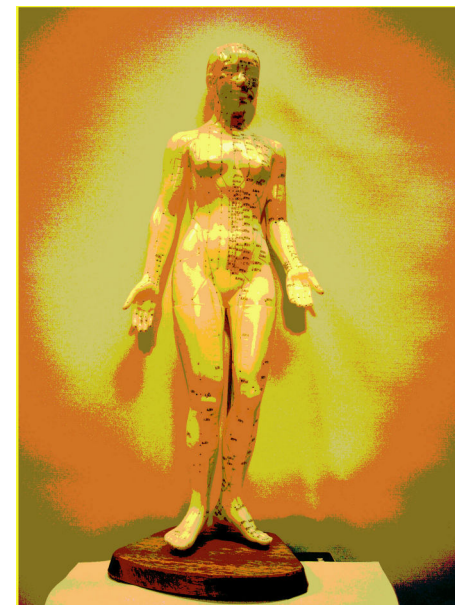


Personal Patches are not a food or a drug. They are exclusive to the Human Body Software Industry utilizing NANOTECHNOLOGY & our patent pending INVISI-TECH programming.



THE PAIN MANAGEMENT PERSONAL PATCH

NO PILLS NO DRUGS
NO ORGANICS
SIMPLY
AMAZING
PERSONALPATCHES.COM





PERSONAL
PATCHES.COM

Have developed a distinctive and proprietary method of programming multi-layered holographic discs, we call Personal Patches™ with Invisi-Tech,™ an exclusive patent-pending technology that adhesively binds sound vibrations & frequency waves into the holograms for the purpose of influencing the human pain cycle.

Once applied, the body's energy field triggers the release of these vibrations stored in the Pain Management Personal Patch and affects the causes of pain. The vibration transfer applied to Pain Management Personal Patches is non-transdermal, non-invasive and therefore, nothing enters into the body thru the skin. The Pain Management Personal Patch properly placed, can cause a remarkable decrease in pain with calming and sedating the bodies energy flow(s).

DISCLAIMER

PersonalPatches.com™ products are sold for learning, self-improvement and simple relaxation. No statement contained in this writing, and no information provided by any PersonalPatches.com agent, should be construed as a claim or representation that these products are intended for use in the diagnosis, cure, mitigation, treatment or prevention of disease or any other medical condition. The information contained in this writing is deemed to be based on reliable and authoritative report. However, certain persons considered experts may disagree with one or more of the statements contained here. PersonalPatches.com assumes no liability or risk involved in the use of the products described here. We make no warranty, expressed or implied, other than that the material conforms to applicable standard specifications. All other legal statements at www.PersonalPatches.com



Pain Management Personal Patches can provide immediate relief to pain to all parts of the body by helping the body balance blockages affecting the acupuncture meridian to the points of discomfort. The effects are:

Reduced swelling

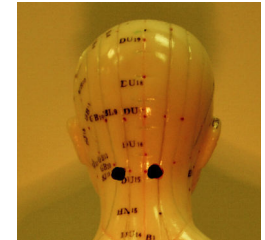
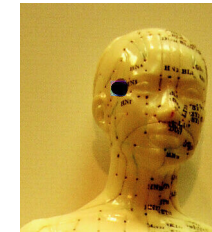
Increasing circulation to affected areas

For over 5,000 years, traditional Chinese healing arts have developed various forms of promoting inner energy flow. The refined arts of acupuncture, acupuncture point massage (aka: Shiatsu, or Acupressure), Tai 'Chi, Qi Gong are all time-tested vehicles for inner energy promotion. Mapped out from ancient Chinese medical texts and named after different organs and body systems, the energy flow runs along body pathways called, "meridians."

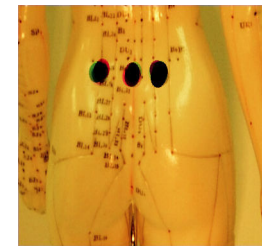
A common example of energy flow can be equated to the movement of water through a garden hose. The water flows freely until a kink occurs in the hose. This reduces a strong flow to slow trickle. If we straighten the kink, the water flow is no longer blocked and its flow strength returns. This can be compared to the stimulating of an acupuncture point along a stagnant meridian. Point stimulus restores energy flow.

Place the Personal Pain Management Patch over the painful area.

Below are sample placements for headache.



ON ONE OR BOTH TEMPLES UPPERNECK BACK BOTH SIDES



LOWER BACK PAIN

Pain Management Personal Patches work best when placed on both sides of pain.

Suggested uses:

- | | |
|--------------|---------------|
| Tennis Elbow | Shoulder Pain |
| Knee Pain | Toothache |
| Headache | Sinus Pain |
| Migraine | Rheumatoid |
| Arthritis, | Bruising |
| Injury Pain | Surgery |
| Cramps | Accidents |
| Bursitis | and more... |