



Tired of taking caplets, pills & sprays for relief from sinus congestion? Relieve your sinuses – naturally!



**SINUS-AID™**  
ALLERGY RELIEF

[PersonalPatches.com](http://PersonalPatches.com)  
NO Pills, NO Drugs  
NO ORGANICS,  
SIMPLY AMAZING.



[PERSONALPATCHES.COM](http://PERSONALPATCHES.COM)

Personal patches are not a food or a drug. They are exclusive to the Human Body Soft Ware Industry utilizing NANOTECHNOLOGY and our patent pending INVISI-TECH programming.

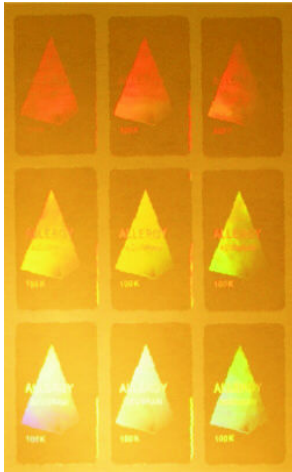


PersonalPatches.com™ products are sold for learning, self-improvement and simple relaxation. No statement contained in this writing, and no information provided by any PersonalPatches.com agent, should be construed as a claim or representation that these products are intended for use in the diagnosis, cure, mitigation, treatment or prevention of disease or any other medical condition. The information contained in this writing is deemed to be based on reliable and authoritative report. However, certain persons considered experts may disagree with one or more of the statements contained here. PersonalPatches.com assumes no liability or risk involved in the use of the products described here. We make no warranty, expressed or implied, other than that the material conforms to applicable standard specifications. All other legal statements at [www.PersonalPatches.com](http://www.PersonalPatches.com)

“I sincerely thank you for your new Sinus-Aid Personal Patches. I use the Sinus-Aid Personal Patches frequently because I have allergies. I used to take over the counter allergy medicines almost every day. I even had to take different over the counter drugs because I would become immune to them. I tested the Sinus-Aid Personal Patches by putting one behind my right ear and found that within 15 minutes it cleared my sinuses. I now use the Sinus-Aid exclusively and have not used over the counter drugs in at least six months.

I also used to get sinus headaches that would progress to migraines if left to long. I now seldom get headaches and when I can tell one is coming on, I immediately put on a Sinus-Aid and it goes away. Thank you for this wonderful product. I have put them on several friends and they say the same thing. They are truly amazing.” - Missy, SC.

“Reluctantly, I tried a Sinus-Aid Personal Patch. I had been taking sinus medication and it was no longer working very well. After about 15 minutes of applying the Personal Patch, I experienced a noticeable difference. I could breathe clearer and I did not have any drying like I had with over-the-counter sinus medications. My ears also were relieved of pressure and pain. Originally a skeptic...I am now devoted to the Sinus-Aid Personal Patches.” - Sue, Atlanta



PersonalPatches has developed a distinctive and proprietary method of programming multi-layered holographic discs, we call Personal Patches™ with InvisiTech,™ an exclusive patent-pending technology that adhesively binds sound vibrations into the holograms for the purpose of influencing the human natural energy field(s).

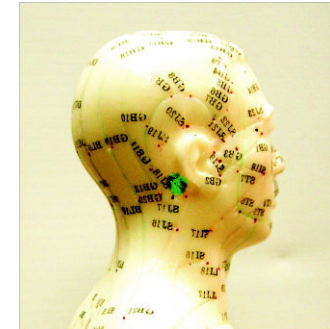
Once applied, the body's energy field triggers the release of these vibrations stored in the Sinus-Aid Personal Patch™ and causes the sinuses to dry up and eyes to stop watering. The vibration transfer applied to the Sinus-Aid Personal Patch™ is non-transdermal and non-invasive therefore, nothing enters into the body thru the skin. The Personal Patch™ properly placed, can cause a remarkable help by naturally reducing the affects of allergies and colds.

Sinus-Aid Personal Patch™ can provide an effective way to help you slow running nose, sinus drainage and eye watering.

For over 5,000 years, traditional Chinese healing arts have developed various forms of promoting inner energy flow. The refined arts of acupuncture, acupuncture point massage, Tai 'Chi, QiGong are all time-tested vehicles for inner energy promotion. Mapped out from ancient Chinese medical texts and named after different organs and body systems, the energy flows runs along body pathways called, "meridians."

A common example of energy flow can be equated to the movement of water through a garden hose. The water flows freely until a kink occurs in the hose. This reduces a strong flow to slow trickle. If we straighten the kink, the water flow is no longer blocked and its flow strength returns. This can be compared to the stimulating of an acupuncture point along a stagnant meridian. Point stimulus restores energy flow.

Place the Sinus-Aid Personal Patch behind your right ear between the hair line and ear. In acupuncture known as SJ 18 and GB 20.



Depicted above is Acupuncture point SJ 18 and GB 20 used by Acupuncturist to reduce the effects of colds, allergies, and hay fever

Place Personal Patch on one side only.

**SIMPLE, SAFE, AND HEALTHY**

Sinus-Aid Personal Patches™ quickly help your body naturally relieve the effects of sinus drainage, colds, eye watering, and the flu.

The Sinus-Aid Personal Patches™ work non-invasively by stimulating specific acupuncture meridians.