



“The Personal SLIM-AID patch is incredible. I put one on my leg at the acupuncture point as recommended and it helped me loose pounds by reducing my appetite and energizing me. I highly recommend anyone to use the SLIM-AID patch.

I have lost 10 pounds this last month just by not eating as much and by improving my exercise habits.” - S.D. California

“Thank you for your new SLIM-AID Personal Patches. I never thought the patches would work, but after I used one for a week, I felt better and had less appetite. I now have loss enough weight to make me believe that this really works. I am going to get serious about it now and work at it with exercise and a take out sugar in my diet.

Thank you for letting me use this.” - D.B. GA.

Your weight is one reason you are at risk for serious health problems.



PERSONALPATCHES.COM

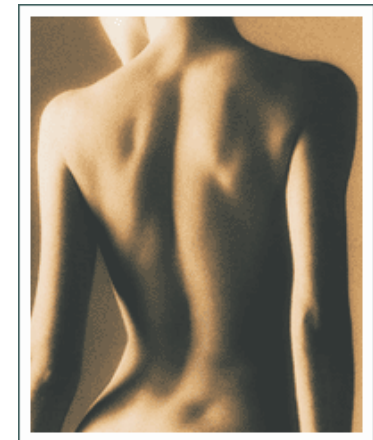
Personal patches are not a food or a drug. They are exclusive to the Human Body Soft Ware Industry utilizing NANOTECHNOLOGY and our patent pending INVISI-TECH programming.



SLIM-AID™

Personal
Patches.com™

NATURAL WEIGHT LOSS
Reduced Cravings
Increased Energy
Non-Drug Non-Organic



WEIGHT LOSS

WEIGHT LOSS

WEIGHT LOSS



DESIGNER PATCH

PersonalPatches.com have developed a distinctive and proprietary method of programming multi-

layered holographic discs, we call Personal Patches™ with InvisiTech™, an exclusive patent-pending technology that adhesively binds sound vibrations & frequency waves into the holograms for the purpose of influencing the human energy and craving cycle.

Once applied, the body's energy field triggers the release of these vibrations stored in the SLIM-AID™ Personal Patch™ and causes increased energy and loss of appetite. The vibration transfer applied to the SLIM-AID™

Personal Patch™ is non-transdermal and non-invasive therefore, nothing enters into the body thru the skin. The Personal Patch™ properly placed, can cause a remarkable help in weight loss by reducing appetite and helping the body's inner energy flow(s).



SLIM-AID Personal Patches™ can provide an effective way to help you loose unwanted pounds by:

~Reducing appetite



~Increasing energy flow to give you more

~energy while reducing food intake.

~Improve Your Health and Immunity and joint pain by helping reducing weight.

For over 5,000 years, traditional Chinese healing arts have developed various forms of promoting inner energy flow. The refined arts of acupuncture, acupuncture point massage, Tai 'Chi, Qi-Gong are all time-tested vehicles for inner energy promotion. Mapped out from ancient Chinese medical texts and named after different organs and body systems, the energy flows runs along body pathways called, "meridians."

A common example of energy flow can be equated to the movement of water through a garden hose. The water flows freely until a kink occurs in the hose. This reduces a strong flow to slow trickle. If we straighten the kink, the water flow is no longer blocked and its flow strength returns. This can be compared to the stimulating of an acupuncture point along a stagnant meridian. Point stimulus restores energy flow.

Place the SLIM-AID Personal Patch on your right leg to right of shin, 4 fingers below the knee:



Depicted above is Acupuncture point Stomach 36 used by Acupuncturist to reduce your appetite.

Place Personal Patch on one side only.

SIMPLE, SAFE, AND HEALTHY
No pills No drugs No organics, simply amazing.

SLIM-AID Personal Patches™ quickly help your body increase your energy, balance your metabolism, and decrease your appetite. Combined with diet and exercise produce weight loss will occur with little effort by you.

The SLIM-AID Designer Patches™ work non-invasively by stimulating specific acupuncture meridians, nature's own weight loss process.

PersonalPatches.com™ products are sold for learning, self-improvement and simple relaxation. No statement contained in this writing, and no information provided by any PersonalPatches.com agent, should be construed as a claim or representation that these products are intended for use in the diagnosis, cure, mitigation, treatment or prevention of disease or any other medical condition. The information contained in this writing is deemed to be based on reliable and authoritative report. However, certain persons considered experts may disagree with one or more of the statements contained here. PersonalPatches.com assumes no liability or risk involved in the use of the products described here. We make no warranty, expressed or implied, other than that the material conforms to applicable standard specifications. All other legal statements at www.PersonalPatches.com